



Fixed Link Performance Regime summary 2016

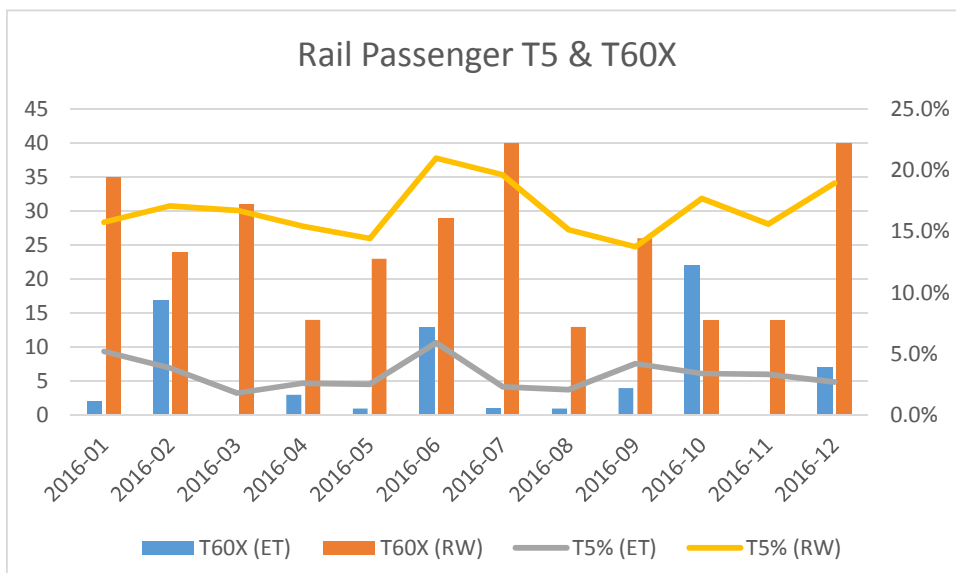
(Document de Référence du Réseau/Network Statement par.7)

11/5/2017

Channel Fixed Link: integrated road & rail transport system, financed & built by private Concessionnaire

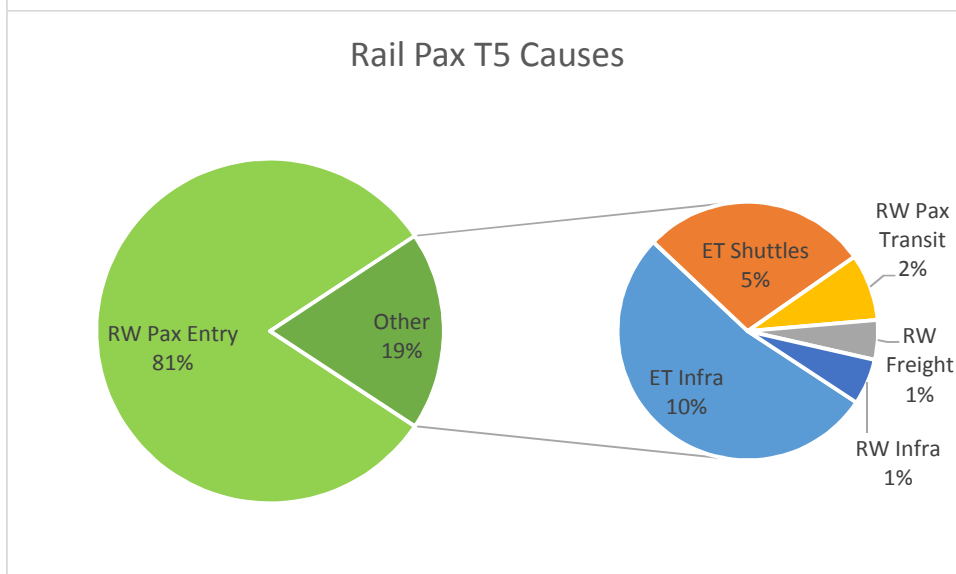
Fixed Link Performance Regime

Rail Passenger Performance 2016



R.Pax incurred	2016	2015
T5% (ET)	3.3%	6.1%
T5% (RW)	16.8%	n/a
T60X (ET)	71	242
T60X (RW)	304	n/a

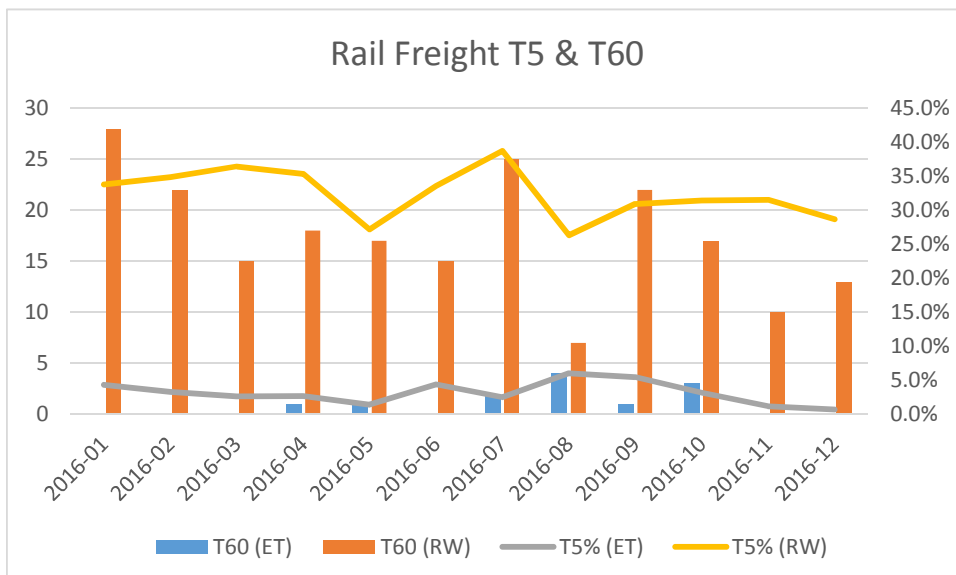
Tx = delay over x minutes at Fixed Link exit (incl. entry+transit)
 Tx(ET) = delay for all Eurotunnel causes (incl. infrastructure & shuttles)
 Tx(RW) = delay for all railway causes (incl. upstream IMs, stations, operator)
 RW.Pax Transit = delay for R.Pax causes (operator) within Fixed Link



R.Pax caused	2016	2015
T5% Shuttles	1.4%	n/a
T5% R.Freight	0.9%	n/a
T60X Shuttles	116	n/a
T60 R.Freight	3	n/a

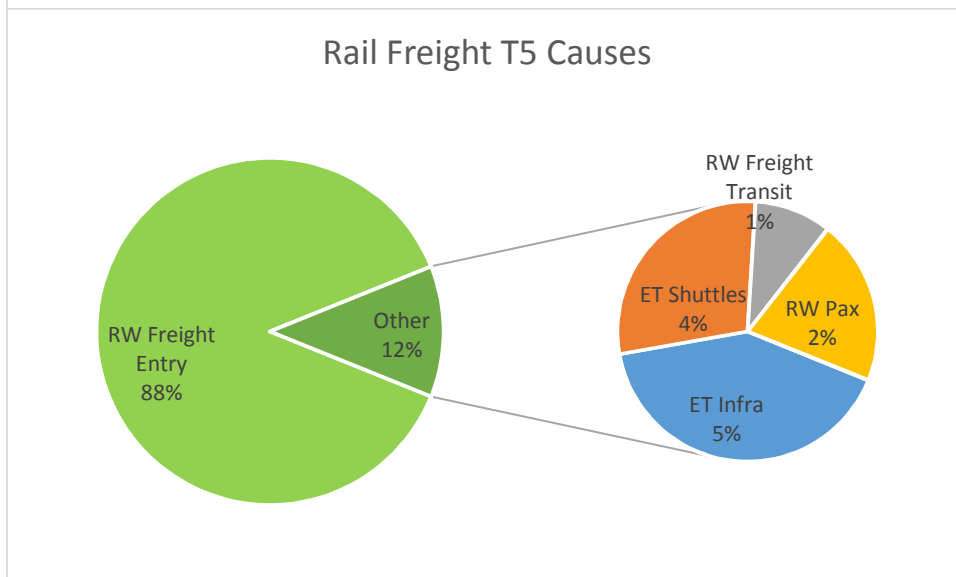
Fixed Link Performance Regime

Rail Freight Performance 2016



R.Frt incurred	2016	2015
T5% (ET)	3.1%	n/a
T5% (RW)	32.5%	n/a
T60X (ET)	12	n/a
T60X (RW)	209	n/a

Tx = delay over x minutes at Fixed Link exit (incl. entry+transit)
 Tx(ET) = delay for all Eurotunnel causes (incl. infrastructure & shuttles)
 Tx(RW)= delay for all railway causes (incl. upstream IMs, yards, operator)
 RW.Freight Transit = delay for R.Freight causes (operator) within Fixed Link



R.Frt caused	2016	2015
T5% Shuttles	0.6%	n/a
T5% R.Pax	0.2%	n/a
T60X Shuttles	9	n/a
T60 R.Pax	1	n/a

Fixed Link Performance Regime

Main Delays & Perf. Improvements 2016

■ Major T60 incidents in 2016

- 18/10: Catenary fault at UK u/g Crossover door (21 RPax, 3 RFreight)

■ Other T60 incidents in 2016

- 8/2: Catenary issue int.6 (10 RP)
- 24/12: Works train (7 RP)
- 18/2: Power supply int.3 (6 RP)
- 30/6: Shuttle 6459 locomotive fault (6 RP)

■ Top causes of ET Infra T5 delays

- Power supply (18%)
- Catenary (17%)
- Signalling (16%)

■ Main performance improvement initiatives in progress

- Security reinforcements on French sites (Coquelles & Fréthun)
- Balancer/SVC e320 interference: software patch & renewal
- Catenary reinforcement programme
- Tunnel measurement & control train
- Works train tunnel cleaning module